



 **RAPHAEL**

Product brochure

# PLASTIC PILOT

3-WAY PRESSURE AND FLOW PILOT CONTROL



## PLASTIC PILOT PC

### 3 WAY PRESSURE AND FLOW PILOT CONTROL

Valve size: 1"-4"

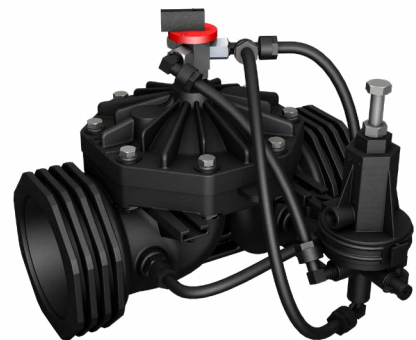
The pressure and flow plastic pilot is a 3-way pressure pilot available in 3 different versions:

PMSR Universal pilot to control valve as pressure reducing or pressure sustaining valve

PMR High performance pilot for pressure reducing control

PMF Flow control pilot

- \* The Plastic Pilot is specially design for irrigation application.
- \* Two pilots can be combined together on a single valve to form a bi functional valve operation.
- \* The pressure-regulating model is available in normal pressure or low-pressure configurations.
- \* The Plastic Pilot 's body is made of high quality reinforced plastic.
- \* The screw located on top of the valve does the calibration of the pilot.

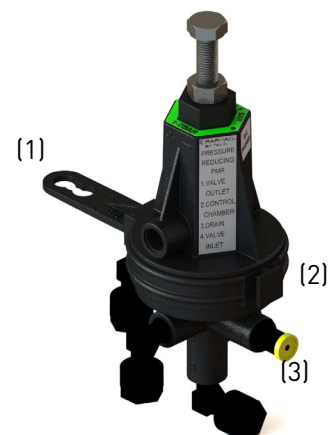


The pilot can be fix on the valve in 2 different orientation to allow an easy connection of the different version.

This modification is done by moving the fixing part (1) to the groove (2).

This modification could ease the access of some of the connections.

Additional port (3) - allow optional assembling of Pressure check point.



# PMR PLASTIC PILOT

## 3 WAY PRESSURE REDUCING PILOT

High performance pilot for pressure reducing control

Valve size: 1"-4"

Equipped with four connections:

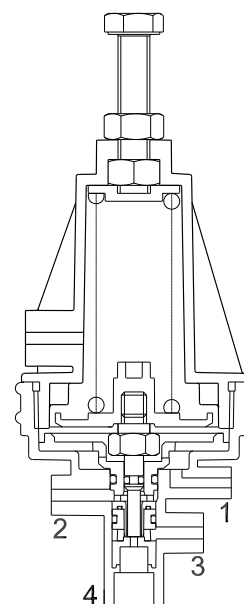
1. Sensor connection - Connected to valve outlet.
2. Command connection - Connected to valve control chamber.
3. Drain - open to the atmosphere
4. Pressure connection - Connected to valve inlet.

## PRESSURE REDUCING VALVE

Maintains a constant downstream pressure, as set on the 3-W plastic pilot, regardless of flow or upstream pressure changes.

### Adjusting

Turning the adjusting screw counter clockwise (-) pressure will decrease.  
Turning the adjusting screw clockwise (+) pressure will increase.



### Spring adjustment range

Green (standard)	1-6 bar
Red	0.6-2.7 bar

### Technical Data

Pressure rating	10 bar (150 psi)
Pressure adjustment range	0.3-7.5 bar (5-100 psi)
Maximum temperature	50 °C (120 °F)
Port Connections	1/8" BSP x 8 mm



## PMSR PLASTIC PILOT

### 3-WAY Universal pilot to control valve as pressure reducing or pressure sustaining valve

#### PRESSURE SUSTAINING MODE

Valve size: 1"-4"

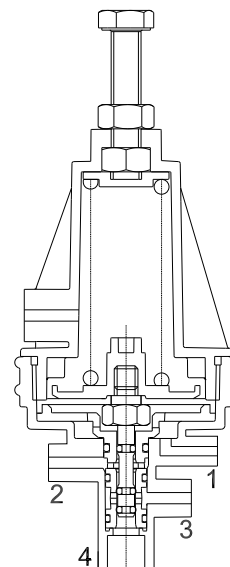
Equipped with four connections:

1. Sensor connection - Connected to valve inlet.
2. Pressure connection- Connected to valve inlet.
3. Command connection - Connected to valve control chamber.
4. Drain - open to the atmosphere

#### PRESSURE SUSTAINING VALVE

Maintains a minimum upstream pressure, as set on the 3-W pressure sustaining plastic pilot, regardless of flow changes.

Spring adjustment range	
Green (standard)	1-7 bar
Red	0.8-3 bar



#### PRESSURE REDUCING MODE

Valve size: 1"-4"

Equipped with four connections:

1. Sensor connection - Connected to valve outlet.
2. Drain - open to the atmosphere
3. Command connection - Connected to valve control chamber.
4. Pressure connection- Connected to valve inlet.

#### PRESSURE REDUCING VALVE

Maintains a constant downstream pressure, as set on the 3-W plastic pilot, regardless of flow or upstream pressure changes.

Spring adjustment range	
Green (standard)	1-6 bar
Red	0.6-2.7 bar

#### Adjusting for Sustaining or Reducing Mode

Turning the adjusting screw counter clockwise (-) pressure will decrease.  
Turning the adjusting screw clockwise (+) pressure will increase.

Technical Data	
Pressure rating	10 bar (150 psi)
Pressure adjustment range	0.3-7.5 bar (5-100 psi)
Maximum temperature	50 °C (120 °F)
Port Connections	1/8" BSP x 8 mm



# PMF PLASTIC PILOT

## 3-WAY FLOW CONTROL PILOT

Flow control pilot

Valve size: 1"-4"

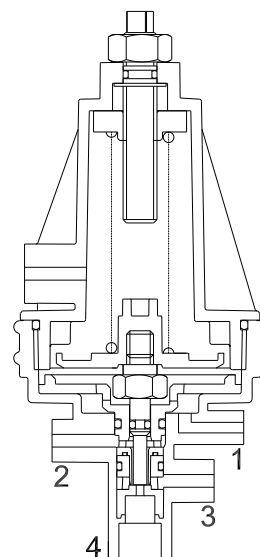
Equipped with four connections:

1. Connected to the valve downstream
2. Connected to the valve upstream
3. Connected to the valve control chamber
4. Drain - open to the atmosphere
5. Connected to calibrated orifice

### Adjusting

Turning the adjusting screw clockwise (+) flow will increase.

Turning the adjusting screw counter clockwise (-) flow will decrease.



### Technical Data

Pressure rating	10 bar (150 psi)
Maximum temperature	50 °C (120 °F)
Port Connections	1/8" BSP x 8 mm





**FIRE PROTECTION**



**IRRIGATION**



**WATERWORKS**



**SMART SOLUTIONS**

**RAPHAEL VALVES INDUSTRIES (1975) LTD**, founded in 1949, is the first Israeli manufacturer of water control valves. RAPHAEL 's research department constantly strives to introduce new and innovative products and solutions for water control systems including water works, fire-protection and irrigation systems and other fields.

**RAPHAEL Valves Industries (1975) Ltd.**

North Industrial Zone

Or Akiva, 30600

POBox 555, Israel

**Phone:** +972 4 6263555

**E-mail:** [export@raphael-valves.com](mailto:export@raphael-valves.com)

**Website:** [www.raphael-valves.com](http://www.raphael-valves.com)



 **RAPHAEL**