



IOM RAF 32

Electric Remote Control Valve N.O.

“ECI” Solenoid

2” – 4”

RAPHAEL VALVES INDUSTRIES

Sep-24

DESCRIPTION

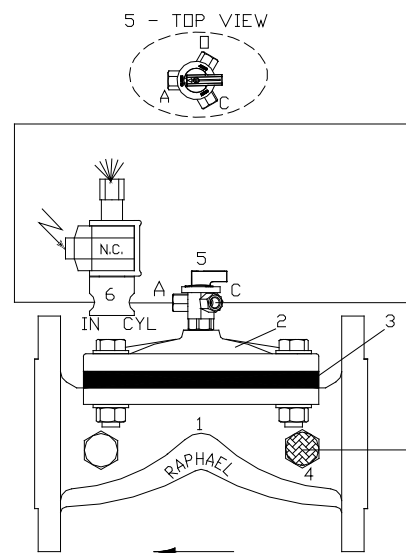
This valve is a hydraulic “on-off” control valve that can be operated manually or by electric remote control. The valve can be “normally open” (NO) or “normally closed” (NC), as required. “Normally” means the state of the valve when the solenoid is de-energized.

INSTALLATION

- Before installing the valve, flush the pipeline to remove scale, dirt and other particles that might affect the valve’s performance.
- Install the valve as indicated by the arrow on the valve’s cover, showing flow direction.
- Make sure that the solenoid has the right specifications and connect it to the energy source.
- It is recommended to install isolation valves (butterfly valves type B8) upstream and downstream the control valve.
- Check for leaks; tighten bolts & fittings if necessary.

PARTS LIST

1. Body
2. Cover
3. Diaphragm
4. Self-Flushing “Finger” Filter
5. 3 Way Selector
6. 3 Way N.C. Solenoid



OPERATING INSTRUCTIONS

1. Electrical Operation

- Turn 3-way selector #5 to the “Auto” position.
 - For normally closed valves -
 - To open the valve, energize solenoid # 6.
 - To close the valve, de-energize solenoid # 6.
 - For normally opened valves -
 - To open the valve, de-energize solenoid # 6.
 - To close the valve, energize solenoid # 6.

2. Manual Operation

- To open the valve, turn the 3-way selector #5 to the “Open” position.
- To close the valve, turn the 3-way selector #5 to the “Close” position.

MAINTENANCE

- No maintenance is required. However, from time to time it is recommended to rotate the 3-way selector 360° to prevent sticking by sediments. During the off season, energize the solenoid from time to time for the same reason.
- It is recommended that the valve be easily accessible as well as clearly marked to prevent accidental damage.
- In freezing climates, the valve should be dismantled, and water drained during the winter months.

TROUBLESHOOTING RAF 32 ECI Solenoid

PROBLEM	CAUSE	CHECK	SOLUTION
The valve does not close.	<ol style="list-style-type: none"> 1. The 3-Way selector (5) is in the "open" position. 2. The solenoid (6) is not connected to power supply. 3. The solenoid (6) is energized, but the hydraulic valve does not close. 4. Foreign objects on the sealing seat. 5. Damaged diaphragm (3) 6. Blocked self-flushing filter (4). 	<ol style="list-style-type: none"> 1. Check state of selector. 2. Check for loose wires or improper power supply. 3. Check coil by touching it with a small screwdriver. It should be magnetized when solenoid is energized. 4. Constant water flow downstream. 5. No response to manually closing the valve. 6. No response to manually closing the valve. 	<ol style="list-style-type: none"> 1. Turn selector to the "close" or "Auto" position. 2. Wire properly and activate. 3. If coil is damaged, replace coil with a new one. 4. & 5. Turn off water supply to the valve. Remove cover (2) and remove foreign object. Check that diaphragm, body and cover are not damaged. Replace if required. 6. Turn off water supply to valve. Remove filter, clean, or change it. Re-assemble and activate.
The valve does not open.	<ol style="list-style-type: none"> 1. The 3-Way selector (5) is in the "close" position. 2. Power supply is still on. 3. Power supply is off, but valve does not open due to blocked or stuck solenoid (6). 4. Clogged port on valve's cover (2) or clogged 3-way selector (5). 	<ol style="list-style-type: none"> 1. Check state of selector. 2. Check electrical supply to the solenoid. 3. No water is vented from the solenoid's vent. Check by manually opening the valve. 4. No water is vented from 3-way selector (5) when turned to 'Open' position. 	<ol style="list-style-type: none"> 1. Turn selector to the "Auto" or "open" position. 2. Disconnect electrical supply. 3. Turn off water supply to the valve. Dismantle and clean the solenoid's drains. Reassemble and activate. 4. Turn off water supply to valve. Disassemble 3-way selector (5), clean ports or replace selector if needed. Reassemble and activate.

RAPHAEL, founded in 1949, is the first Israeli manufacturer of water control valves. RAPHAEL ´s research department constantly strives to introduce new and innovative products and solutions for water control systems including water works, fire-protection and irrigation systems.



Waterworks



Fire Protection



Irrigation



Smart Solutions

 **RAPHAEL**

RAPHAEL Valves Industries (1975) Ltd.

North Industrial Zone Or Akiva, 3063927 P.O.Box 555, Israel

Tel. +972 4 6263555 | info@raphael-valves.com | raphael-valves.com